

PO Box 3431
Evergreen, CO 80439
www.fomelc.org

September 2019 Newsletter

Fire in Lost Creek Wilderness 100% Contained

Shawnee Peak Fire Information:

Time Reported: 3:15pm, 8/26/19

Location: Near Shawnee Peak, in the Lost Creek Wilderness.

Jurisdiction: USFS

Size: 70 acres

Cause: Lightning

Trails Opened



Some Forests and Counties have continued into Stage 1
Fire Restrictions

Chairman:

Peter Vrolijk

Peter@fomelc.org

Trail Projects Coordinator:

Steve West

steve@fomelc.org

Weed Projects Coordinator:

Alan Rockwood

Alan@fomelc.org

Secretary:

Dee Lyons

dee@fomelc.org

Treasurer:

Matt Komos

Matt@fomelc.org

Webmaster Team Lead:

Alan@fomelc.org

Marketing/Education Team

Lead: Gordon Brown

Brown327@yahoo.com

Trail Patrols & Hosts:

Dave Swinehart

Newsletter:

Dee Lyons

dee@fomelc.org

Forest Service Liaison

Ralph Bradt

ralph.bradt@usda.gov

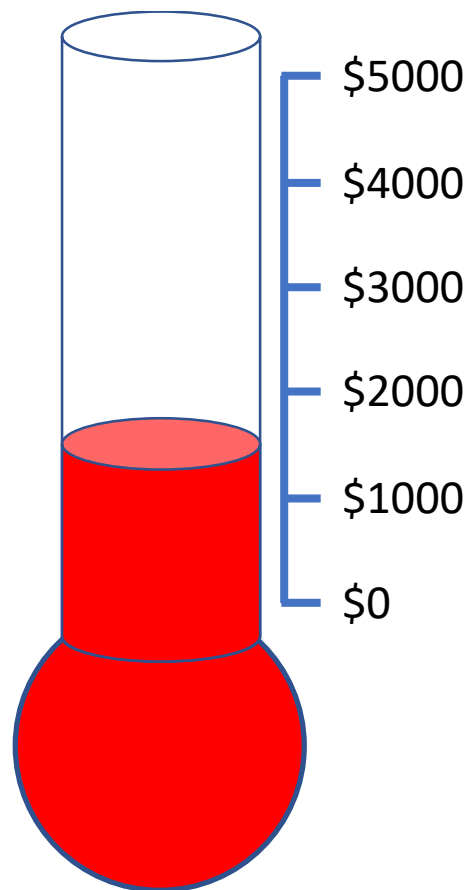
2019 Website Fundraising Status

We continue to make progress toward our fund-raising goal for the year but still need more contributions to fill our thermometer. Our goal was set to cover the cost of revamping the FOMELC website where work is already underway. Because we have no other funding for this important project, please consider a donation of any size to help us reach this goal by the end of the year.

Please help us keep our website running by making donation to FOMELC:

<http://www.fomelc.org/contribute>

Your contribution to our 501(c)3 organization is tax-deductible.



UPCOMING EVENTS

FOMELC Year End Member Celebration October 5th Trail Construction & Dinner

All members please plan on attending Saturday, October 5, 2019 for our annual Year-end Party to celebrate a successful 2019.

For those who would love to do one last trail maintenance/construction:



TRAIL: AG-Brookside Trail Construction

WHERE: Meet at the AG Ranch

WHEN: Saturday Oct 5th - 9AM – 4PM

WHAT TO BRING: Gloves, rain gear, various layers of clothing depending on temperature, sturdy shoes, lunch and water. Tools and hardhats are provided.

If you plan on attending the trail work: [Contact Steve West at: steve@fomelc.org to RSVP.](mailto:steve@fomelc.org)

Dinner at the AG Ranch:

WHEN: Saturday, October 5th

TIME: Happy hour at 5:00pm. Dinner at 6:00pm.

WHERE: AG Ranch Forest Service

Highway 285

Shawnee, CO 80475

Food: Provided by Riverbend Eatery, a local Italian eatery in Bailey.

If you plan on attending the dinner:

[Contact Gordon Brown at gordon@fomelc.org or call at 713-725-5318 for RSVP.](mailto:gordon@fomelc.org)

Please, Important that you RSVP for food head count.

Note from the Chair – By Peter Vrolijk

End of the Season

Late summer has passed us and we have entered autumn. You can sense it in the change of light character, the shortened days, and the crispness of early morning. Much of our work for the year is behind us, but there are still opportunities for last trail patrols and small work projects. I especially hope that everyone can join the end of year celebration on **October 5** for one final trail project and a celebration of our accomplishments this year.

As always, there are more things that I would have liked to accomplish this year, but I can also reflect with satisfaction on the things we did accomplish. The wet year yielded an abundance of invasive and native plants, and I hope that our treatments did a fair job of depleting the seed bank stored in wilderness. I traveled down the Beaver Meadows trail and ended above Camp Rock with profound satisfaction for the improvement in the rutted trail condition and the absence of barbed wire fence along the last section of trail.

The Boys and Girls Club event in July has become an annual event, fills me with hope for the future. You will find more details about 2019 accomplishments in future newsletters, but I hope that everyone can find time for one last field contribution before the first snow fall.



*Late summer scene along the Brookside-McCurdy trail
near Craig Park, Lost Creek Wilderness*

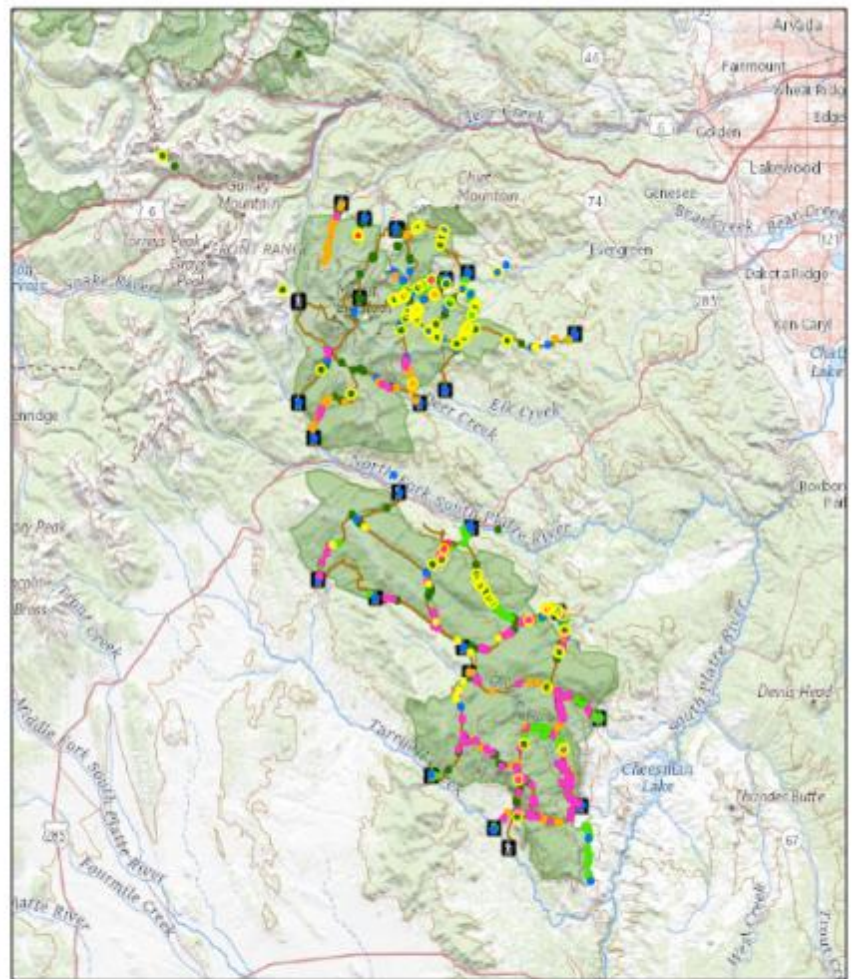
2019 Trail Patrol Overview

Data from the 2019 trail patrols details a comprehensive picture of the state of the Mount Evans and Lost Creek wilderness areas. In Lost Creek, special emphasis was placed on collecting invasive species data, but the map also reflects observations of trail maintenance (mostly downed trees), trail encounters (interacting with other trail users), and illegal campsites (mostly sites within 100' of trail or water containing a permanent fire ring). In the Mount Evans Wilderness, many downed trees were surveyed and removed in the eastern half of the wilderness, trail encounters helped educate trail users about wilderness, and the locations of illegal campsites were recorded.

To all those who collected data that contributed to this map, this is a job well done. With the current Indian Summer, there are still opportunities for some last patrols. Once the snow starts falling, this map will be used in discussions with the USFS to help plan 2020 activities.

Thanks again for everyone's hard work!

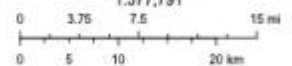
2018 Mount Evans Wilderness Data



9/30/2019, 6:12:04 AM

1:577,791

- | | |
|--------------------------|-------------------------------|
| ● Cleared | ● Campsite |
| ● 2019 FOMELC Field Data | ● Regulations |
| ● Trail Maintenance | ● Other Note |
| ● Noxious Weeds | ● FOMELC Social Trails |
| ● Patrol Event | ● Complete vegetation loss |
| ● Encounter | ● Significant vegetation loss |



USGS The National Map, National Boundaries Dataset, 3DEP Elevation Program, Geographic Names Information System, National Hydrography Dataset, National Land Cover Database, National Structure Dataset, and National Transportation Dataset; USGS Global Ecosystems; U.S. Census

R. Becht
USGS The National Map, National Boundaries Dataset, 3DEP Elevation Program, Geographic Names Information System, National Hydrography Dataset, National Land Cover Database, National

FOMELC Marketing/Education

By Gordon Brown

FOMELC receives a Service Grant from Platte Canyon Community Partnership Resale-Boutique (PCCP) Bailey, Colorado

Happy to announce that FOMELC has received \$2075.00 as a grant amount from PCCP Boutique for holding an event with Boys and Girls Club of the High Rockies. We had about 30 kids attend the event. Topics included: Wonders of the Wilderness and Leave No Trace training. We are excited about having the next event in 2020 to educate children on the wilderness.



Volunteers Needed

Interested in taking an active part in FOMELC operations? There are many behind-the-scenes tasks where administration help is needed. Board Secretary position also available. Contact admin@fomelc.org



FOMELC WEED ERADICATION PROGRAM

From the Noxious Weed Patch – *Alan*

2019 Weed Program *BY THE NUMBERS!*

The 2019 FOMELC weed program is all over except for the report writing. Here is a snapshot of the season.

There were *18* weed projects in our *two* Wilderness Areas not counting the trail patrols that identified noxious weeds and those were significant. The *18* projects contributed more than *850* volunteer hours directly to weed eradication. *Four* of those projects were training activities, both in the classroom and in the field. The other *14* were treatment projects in *23* infested areas.

We had *27* individual volunteers involved in the program. New member Dan Garrow (Evergreen) was responsible for the most volunteer hours on weed projects -- Dan contributed over *49* hours on *five* projects. On Hankins Gulch, he also brought his daughter and her friend, public school teachers visiting from St. Louis, Missouri. (Thank you, teachers! They can tell their students how they spent their vacation protecting bio-diversity in the wilderness!) They added another *18* hours, for a total of *67* "Garrow-hours".

Loren Winters participated in the most projects – *six*. Deb Grass and Keith Kuhlman also turned out for *five* of the projects. In 2019 for the first time, we had *four* treatment projects in Lost Creek Wilderness.

The magic *number* was *10,600* feet of elevation. Above that attitude we found fewer than *10* Canada thistle plants to treat -- where two years ago, we were covering more than *7* acres of significant thistle infestations above that elevation – now only *10* plants!!!

THANK YOU, VOLUNTEERS FOR ANOTHER GREAT YEAR!



FOMELC Mission Statement:

The Mount Evans and Lost Creek Wildernesses encompass 194,400 acres with over 170 miles of trails in Colorado's Pike and Arapaho National Forests.

We work in partnership with the US Forest Service, engaging in education, outreach and stewardship activities to preserve the wilderness character of these lands for current and future generations.

I Have a Question!

Got a general or specific trail question? Admin@fomelc.org email will go to all board members and one of us will get back to you.

How do I become a volunteer with FOMELC?

Check out our website to sign up. www.fomelc.org

Like your Newsletter?

Let Us know!

admin@fomelc.org