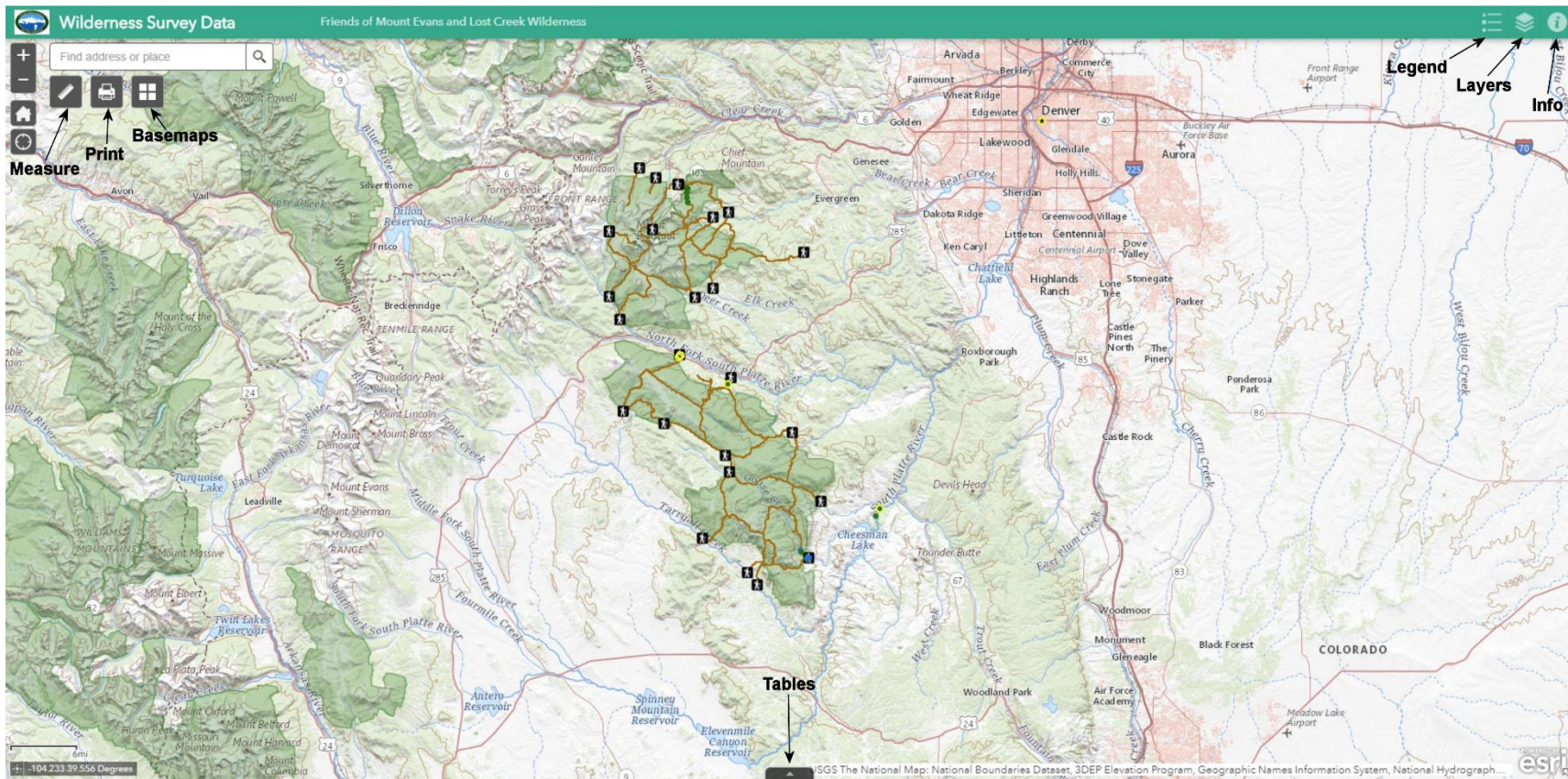


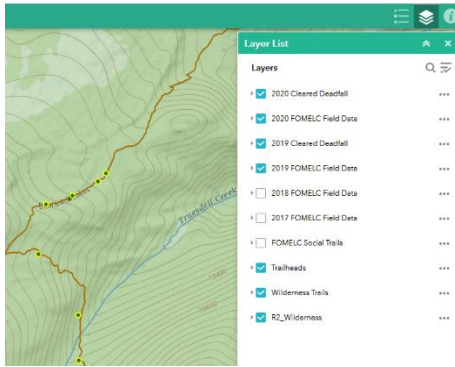
Using the Wilderness data map

<https://melc.maps.arcgis.com/apps/webappviewer/index.html?id=835c79113d8649f39c24eeac76e3dc5d>

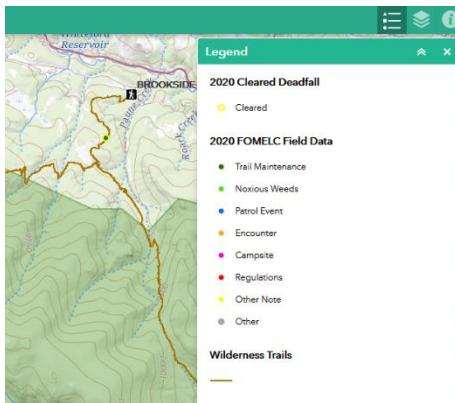
This map was created to show the data collected in the current season using the Friends of Mount Evans and Lost Creek Wildernesses' data collection app. Zoom in and out using your mouse's scroll wheel or by the + and - buttons at the upper left. Pan by dragging the map with the mouse. Below is the basic layout and with the primary tools labelled. Earlier in the season there may be only a few points showing, but more will be added as the season progresses. The data that was collected in past years is also available to view. The map is a great way to quickly see what trails have been hiked and which still need to be covered.



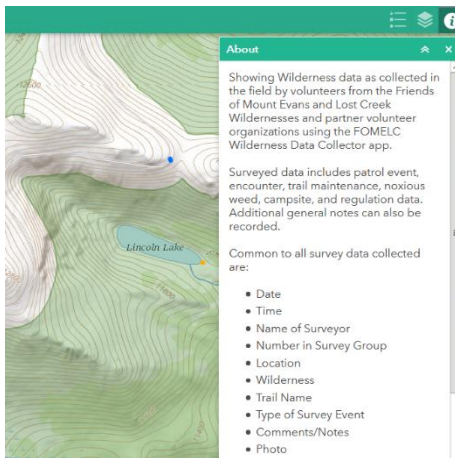
In the upper left are buttons for measuring, printing, and changing the basemaps. In the upper right are buttons for viewing the legend, controlling the layers you want to view, and for information about the map .



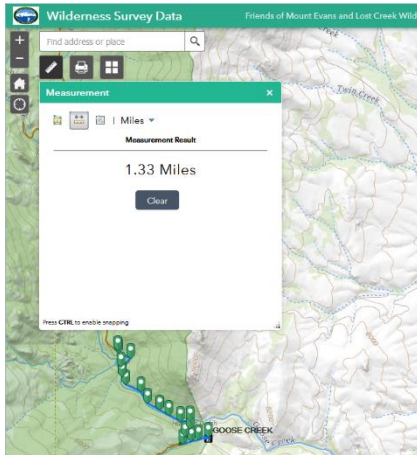
The Layer button controls the layers visible on the map. Check or uncheck layers you want to view or not. Initially, the map comes up with the current year's Cleared Trails and FOMELC Field Data checked. To see the data collected in earlier years, check any of those layers to turn them on.



Next to the Layer button is the Legend button, which shows the legend for each layer which is turned on.

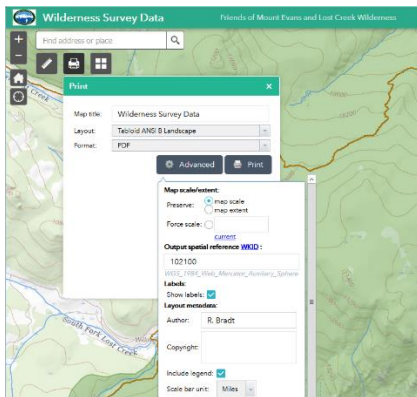


Right of the Layer button is the Information button, which gives you basic information on what the map is about.

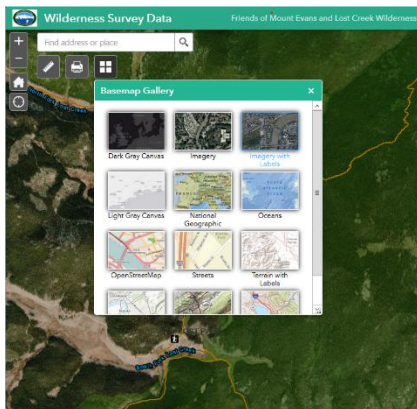


In the upper left are tool buttons for measurement, printing, and changing basemaps.

The Measurement tool allows measurement of areas, linear features, or simple latitude and longitude of locations.

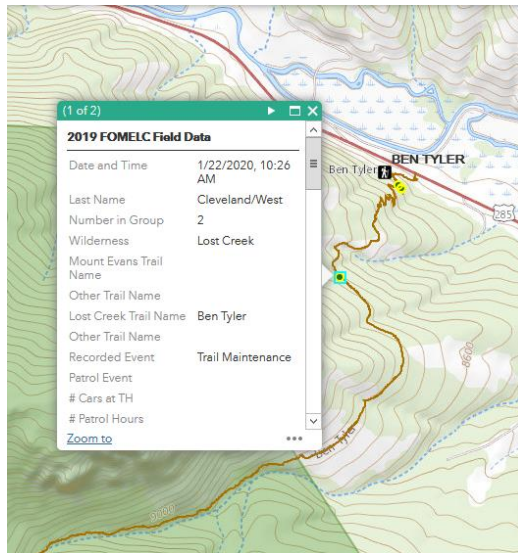


The print button is pretty self-explanatory, allowing you to print out your selected map. An Advanced button provides options for how your map will appear.



Right of the Layer button is the Basemap button, which allows you to select different basemaps, including satellite imagery, to underlie the map.

The map displays good information, but to really dig deep, we want to know just what's happening at each of the points (or lines) on the map. From the legend, we know generally what's at each point, but we may want more specifics. For this, we can query each point for what's going on there.



Clicking on a point will bring up a popup with the information about that point. For some points, such as those collected with the phone app, a lot of different kinds of information that can be attached to a point, but scrolling down the popup will quickly show what has been recorded at that point. In the case of the phone app, if you scroll all the way to the bottom, if a photo has been taken of the point, you'll find an attachment, which will open the attached photo if you click on it.

At times, features will be on top of each other and the popup will have info for each feature at that location. In the example at left, the popup says "(1 of 2)". To the right of the top bar is a triangle which, when clicked, will display the next feature's information

Another way to see the data is to bring up the data table from the tab in the center of the bottom of the map. By default, the table is filtered to show only the features shown within the extent of the map view, but the filter can be turned on or off. There are a lot of fields with a lot of information, but if you're only interested in particular types of data (like deadfall or noxious weeds) you can turn off all the fields you aren't interested in by clicking the white + on the far right of the table and unchecking the fields you aren't interested in.

Date and Time	Last Name	Number in Group	Wilderness	Mount Evans Trail Name	Other Trail Name	Lost Creek Trail Name	Recorded Event	Patrol Event	# Cars at TH	# Patrol Hours	Total_hours	Trail Conditions	Mount Evans Trail Junction	Other Trail
6/18/2019, 11:25 AM	Mosey	1	Mount Evans	Beartrack Lakes			Patrol Event	Start Patrol	4					
6/18/2019, 11:34 AM	Mosey	1	Mount Evans	Beartrack Lakes			Trail Maintenance							

Under Options on the far left, you can filter the data down to particular data of interest, like only locations with Canada thistle. Data can also be sorted by field in ascending or descending order. If you're more comfortable working with spreadsheets, under Options you can export the whole table to a .csv file.

In addition to the overall data map, there are other data maps filtered down to specific areas which work the same way:

Trail Maintenance:

<https://melc.maps.arcgis.com/apps/webappviewer/index.html?id=2e3ddc77942e48f485b688ff877adf31>

Invasive Weeds:

<https://melc.maps.arcgis.com/apps/webappviewer/index.html?id=118932efebbf45ceb073e3a2ebc8d91a>

Campsite inventories:

<https://melc.maps.arcgis.com/apps/webappviewer/index.html?id=0c61d5a24eae480baad891ff5ba8acac>